

FISHWAY STATUS REPORT

Date: 9/5/2015
 Inspection Period: 8/30/2015 thru 9/5/2015

All JD Fishways are inspected twice per day during fish season, Mar. 1 - Nov. 30
 Frequent monitoring of the PLC displays in SMF Fisheries Office as necessary.



JOHN DAY DAM

JD/WC Project-Fisheries
 P.O. Box 823
 Rufus, Oregon 97050
 Phone: 541-506-7860

John Day Dam	Inspections	Criteria	Total Number of Inspections: 14	Temperature: 71 F
	Out of Criteria	Limit		Secchi: 6.0 Ft.
NORTH FISHWAY			4 out of 6 AWS pumps available since 12/23/14	
Exit differential	0	≤ 0.5'		
Exit Control weirs	0	High setting	High setting is normal for JDN	
Count station differential	0	≤ 0.3'		
Weir crest depth (DS gauge)	0	1.0' ± 0.1'		
Entrance differential	0	1.0' - 2.0'	AVG 1.5	
SOUTH FISHWAY			3 AWS Turbines in regular service since 2/28/15	
Exit differential	0	≤ 0.5'		
Exit Control weirs	0	Mid Setting	Mid setting is normal for JDS	
Count station differential	0	≤ 0.3'		
Weir crest depth (US gauge)	0	1.0' ± 0.1'		
South entrance differential	0	1.0' - 2.0'	AVG 1.4	
Entrance weir SE1	0	depth (≥ 8')	AVG 9.6	
Collection channel velocity	0	1.5 - 4 fps	AVG 3.06	
N. Entrance PH(Bay 19)differential	0	1.0' - 2.0'	AVG 1.4	
Entrance weir NE1	0	depth (≥ 8')	AVG 8.3	
Entrance weir NE2	0	depth (≥ 8')	AVG 8.3	
JUVENILE PASSAGE			Returned to regular SMF sampling on 9/5; a low # of smolts & high # of juvenile shad detected	
Forebay/bypass conduit differential	0	4.0' - 5.0'	AVG 4.6	
Submersible traveling screens	0	visual inspect	Camera device failed on 8/19; unable to complete August STS inspections	
Turbine trashrack drawdown	0	<1.5', wkly	Monthly MU trashracks' raking is scheduled for the week of 8/24.	
Vert barrier screen drawdown	0	<1.5', wkly		
Spill volume	0	Bay2 &1.6K	Spill season ended on 9/1 at 0001 hrs. Bay 2 at 1.6 K for JDN attraction, daylight hours only	
Spill pattern	0	per FPP		
Turbine Unit Priority	0	per FPP		
Turbine 1% Efficiency	0	per FPP		

SMOLT MONITORING FACILITY

Operation:

SMF returned to regular, 24/7 sampling after the river temp decreased to below 69.5 F, on 9/5/15 at 0700 hrs.

JD Fisheries crew continues 24/7 swing shift schedule as required by FPP; it will continue this until the end of sampling season on 9/15.

NO mortalities (0.00%) in the SMF samples by PSMFC since 7/12.

Debris load: very little debris.

Maintenance:

All devices working well without any issues at this time

Research:

None

Fallbacks: AVG: 8 MAX: 9 MIN: 7

OTHER JOHN DAY ISSUES:

Birds :

see the Avian Numbers tab. We report all species and locations, but in reality only gulls in the tailrace BRZ are relevant at JD.

After a peak of White Pelicans in early to mid August, their JD tailrace BRZ's presence is occasional and minimal (a high number of WP still present on the island downstream.) A relatively low number of gulls after the end of spill season as well; mostly flying/exploring the vicinity of JD without much feeding.

Avian Lines 52 snapped on approx. 8/28/15. Avian line #45 broke on 8/2/15 Total snapped lines = 9 ---- 116 lines remain

The following avian lines have snapped this season and are out of commission: 44, 45, 46, 52, 55, 56, and 60.

(lines 25 and 26 have been out of commission since 2013). Planning to replace by a contract in September/October.

Operations:

JD North Fishway in regular service; 5 out of 6 AWS pumps are available. Repair work on pump 4 continues; pump 3 has vibration issues and should be the last last in service.

JD South Fishway in regular service with 3 AWS Turbines; it is meeting the optimal FPP criteria.

Unable to complete the August STS inspection due to the failed camera device. Repairs underway.

MU Gatewell Drawdowns: Differentials are checked Wednesdays and Sundays; all gatewells were in criteria.

Maintenance:

Underwater STS camera device failed on 8/19 ; it is being repaired by JD Electrical.

JD North AWS pumps: four out of total six are available. Repair of AWS pump # 4 by a contractor started on 1/26 & is ongoing.

Calibration: All gauges/ sensors are within the criteria of 0.3' .

Research:

2015 Adult Fish Counting by Normandeau Associates commenced on 1 April, 2015 and will continue daily through 1 November.

Lamprey trapping and collection of adults & juveniles for various tribal and non-tribal studies complete for the 2015 season.

Dam angling to remove NPM from JD PH tailrace, by a crew from Washington F&W underway. 2,808 season total as of 8/31/15.

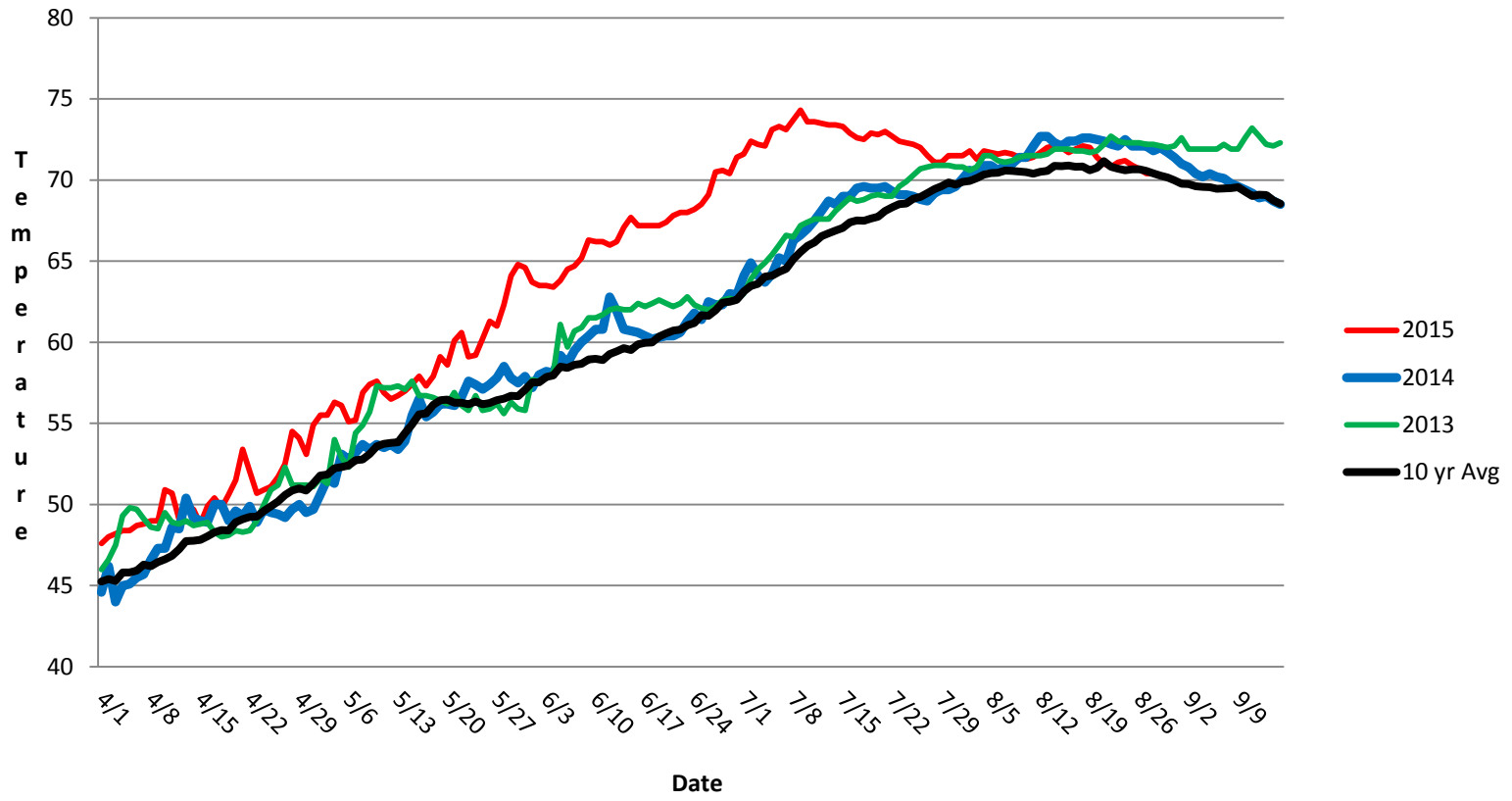
Proposal by PSMFC to install Adult PIT antennas at both JD Fishways is pending; possible installation during the next winter maintenance season 2015/16.

JD North LPS submersible pump (water supply) was modified/ repaired on 8/6. LPS in service and trapping lamprey since. FFU crew in charge/ handling trapped fish

Kevin Moynahan
OPM John Day/Willow Creek Project

Date: September 5, 2015

JDA SMF Water Temp



JDA Collection Channel Velocity

Date 28-Aug-15

By: MDL

Bay(s)	Time	Sec.	Velocity (f/s)
0-2	1:20	80	2.25
2 - 4	2:19	139	3.05
4 - 6	3:14	194	3.27
6 - 8	4:15	255	2.95
8 - 10	5:25	325	2.57
10 - 12	6:30	390	2.77
12 - 14	7:31	451	2.95
14 - 16	8:37	517	2.73
16 - 18	9:13	553	5.00
			3.06

JDA Bird Counts: 8/23/15 to 8/29/15

F(1): Forage AM survey F(2): Forage PM Survey NF(1): Non-Forage AM Survey NF(2): Non-Forage PM Survey

Date	Zone	Gulls				Cormorant				Caspian tern				White Pelican				Grebe				Total
		F(1)	F(2)	NF(1)	NF(2)	F(1)	F(2)	NF(1)	NF(2)	F(1)	F(2)	NF(1)	NF(2)	F(1)	F(2)	NF(1)	NF(2)	F(1)	F(2)	NF(1)	NF(2)	
23-Aug	PHFB	0	0	0	0	0	0	0	0	0	0	0	0	0	0	0	0	3	0	0	0	3 0 0 0 2 0 0 8
23-Aug	SWFB	0	0	0	0	0	0	0	0	0	0	0	0	0	0	0	0	0	0	0	0	
23-Aug	PH1	0	0	0	0	0	0	0	0	0	0	0	0	0	0	0	0	0	0	0	0	
23-Aug	PH2	0	0	0	0	0	0	0	0	0	0	0	0	0	0	0	0	0	0	0	0	
23-Aug	PH3	0	0	0	0	0	0	0	0	0	0	0	0	1	1	0	0	0	0	0	0	
23-Aug	SW1	0	0	0	0	0	0	0	0	0	0	0	0	0	0	0	0	0	0	0	0	
23-Aug	SW2	0	0	0	0	0	0	0	0	0	0	0	0	0	0	0	0	0	0	0	0	
23-Aug	SW3	0	0	0	0	0	0	0	0	0	0	0	0	3	5	0	0	0	0	0	0	
Avg/Survey		0	0	0	0	0	0	0	0	0	0	0	0	5	0	0	0	2	0	0	0	13
24-Aug	PHFB	0	0	28	0	0	0	0	0	0	0	0	0	0	0	0	0	5	5	0	0	38 0 0 0 31 0 5 83
24-Aug	SWFB	0	0	0	0	0	0	0	0	0	0	0	0	0	0	0	0	0	0	0	0	
24-Aug	PH1	0	0	0	0	0	0	0	0	0	0	0	0	0	0	0	0	0	0	0	0	
24-Aug	PH2	0	0	0	0	0	0	0	0	0	0	0	0	0	0	0	0	0	0	0	0	
24-Aug	PH3	21	10	0	0	0	0	0	0	0	0	0	0	0	0	0	0	0	0	0	0	
24-Aug	SW1	0	0	0	0	0	0	0	0	0	0	0	0	0	0	0	0	0	0	0	0	
24-Aug	SW2	5	0	0	0	0	0	0	0	0	0	0	0	0	0	0	0	0	0	0	0	
24-Aug	SW3	52	31	0	0	0	0	0	0	0	0	0	0	0	0	0	0	0	0	0	0	
Avg/Survey		60	14	0	0	0	0	0	0	0	0	0	0	0	0	0	0	5	0	0	0	157
25-Aug	PHFB	0	0	0	0	0	0	0	0	0	0	0	0	0	0	0	0	6	4	0	0	10 0 0 0 6 0 0 10
25-Aug	SWFB	0	0	0	0	0	0	0	0	0	0	0	0	0	0	0	0	0	0	0	0	
25-Aug	PH1	0	0	0	0	0	0	0	0	0	0	0	0	0	0	0	0	0	0	0	0	
25-Aug	PH2	0	0	0	0	0	0	0	0	0	0	0	0	0	0	0	0	0	0	0	0	
25-Aug	PH3	3	2	0	0	0	0	0	0	0	0	0	0	1	0	0	0	0	0	0	0	
25-Aug	SW1	0	0	0	0	0	0	0	0	0	0	0	0	0	0	0	0	0	0	0	0	
25-Aug	SW2	0	0	0	0	0	0	0	0	0	0	0	0	0	0	0	0	0	0	0	0	
25-Aug	SW3	7	0	0	0	0	0	0	0	0	0	0	0	2	1	0	0	0	0	0	0	
Avg/Survey		6	0	0	0	0	0	0	0	0	0	0	0	2	0	0	0	5	0	0	0	26
26-Aug	PHFB	0	0	0	11	0	0	0	0	0	0	0	0	0	0	0	0	5	5	0	0	21 117 0 0 23 0 0 357
26-Aug	SWFB	0	0	0	117	0	0	0	0	0	0	0	0	0	0	0	0	0	0	0	0	
26-Aug	PH1	0	0	0	0	0	0	0	0	0	0	0	0	0	0	0	0	0	0	0	0	
26-Aug	PH2	0	0	0	0	0	0	0	0	0	0	0	0	0	0	0	0	0	0	0	0	
26-Aug	PH3	11	9	0	0	0	0	0	0	0	0	0	0	3	0	0	0	0	0	0	0	
26-Aug	SW1	0	0	0	0	0	0	0	0	0	0	0	0	0	0	0	0	0	0	0	0	
26-Aug	SW2	0	0	0	0	0	0	0	0	0	0	0	0	0	0	0	0	0	0	0	0	
26-Aug	SW3	127	111	116	0	0	0	0	0	0	0	0	0	0	3	0	0	0	0	0	0	
Avg/Survey		129	122	0	0	0	0	0	0	0	0	0	0	3	0	0	0	5	0	0	0	518

JDA Bird Counts: 8/23/15 to 8/29/15

F(1): Forage AM survey F(2): Forage PM Survey NF(1): Non-Forage AM Survey NF(2): Non-Forage PM Survey

Date	Zone	Gulls				Cormorant				Caspian tern				White Pelican				Grebe				Total
		F(1)	F(2)	NF(1)	NF(2)	F(1)	F(2)	NF(1)	NF(2)	F(1)	F(2)	NF(1)	NF(2)	F(1)	F(2)	NF(1)	NF(2)	F(1)	F(2)	NF(1)	NF(2)	
27-Aug	PHFB	0	0	0	6	0	0	0	1	0	0	0	0	0	0	0	0	0	0	0	3	10
27-Aug	SWFB	0	0	0	0	0	0	0	0	0	0	0	0	0	0	0	0	0	0	0	0	0
27-Aug	PH1	0	0	0	0	0	0	0	0	0	0	0	0	0	0	0	0	0	0	0	0	0
27-Aug	PH2	0	0	0	0	0	0	0	0	0	0	0	0	0	0	0	0	0	0	0	0	0
27-Aug	PH3	6	0	0	0	0	0	0	0	0	0	0	0	0	0	0	0	0	0	0	0	6
27-Aug	SW1	0	0	0	0	0	0	0	0	0	0	0	0	0	0	0	0	0	0	0	0	0
27-Aug	SW2	0	0	0	0	0	0	0	0	0	0	0	0	9	0	0	0	0	0	0	0	9
27-Aug	SW3	11	22	0	0	0	0	0	0	0	0	0	0	0	2	0	0	0	0	0	0	35
Avg/Survey		20		3		0		1		0		0		6		0		0		2		60
28-Aug	PHFB	0	0	15	4	0	0	1	0	0	0	0	0	0	0	0	0	0	0	9	0	29
28-Aug	SWFB	0	0	2	0	0	0	0	0	0	0	0	0	0	0	0	0	0	0	0	0	2
28-Aug	PH1	0	0	0	0	0	0	0	0	0	0	0	0	0	0	0	0	0	0	0	0	0
28-Aug	PH2	0	0	0	1	0	0	0	0	0	0	0	0	0	0	0	0	0	0	0	0	1
28-Aug	PH3	0	3	0	0	0	0	0	3	0	0	0	0	0	0	0	0	0	0	0	0	6
28-Aug	SW1	0	0	0	0	0	0	0	0	0	0	0	0	0	0	0	0	0	0	0	0	0
28-Aug	SW2	0	1	0	0	0	0	0	0	0	0	0	0	0	0	0	0	0	0	0	0	1
28-Aug	SW3	4	0	0	0	0	0	15	0	0	0	0	0	0	0	0	0	0	0	0	0	19
Avg/Survey		4		11		0		10		0		0		0		0		0		5		58
29-Aug	PHFB	0	0	0	0	0	0	0	0	0	0	0	0	0	0	0	0	0	0	0	0	0
29-Aug	SWFB	0	0	0	0	0	0	0	0	0	0	0	0	0	0	0	0	0	0	0	0	0
29-Aug	PH1	0	0	0	0	0	0	0	0	0	0	0	0	0	0	0	0	0	0	0	0	0
29-Aug	PH2	0	0	0	0	0	0	0	0	0	0	0	0	0	0	0	0	0	0	0	0	0
29-Aug	PH3	4	8	0	0	0	0	0	0	0	0	0	0	0	2	0	0	0	0	0	0	14
29-Aug	SW1	0	0	0	0	0	0	0	0	0	0	0	0	0	0	0	0	0	0	0	0	0
29-Aug	SW2	0	0	0	16	0	0	0	0	0	0	0	0	0	0	0	0	0	0	0	0	16
29-Aug	SW3	25	1	0	0	0	0	0	0	0	0	0	0	0	8	0	0	0	0	0	0	34
Avg/Survey		19		8		0		0		0		0		5		0		0		0		64
Totals	Gulls				Cormorant				Caspian tern				White Pelican				Grebe				Total	
	F	F	NF	NF	F	F	NF	NF	F	F	NF	NF	F	F	NF	NF	F	F	NF	NF		
Weekly Total	474	316	0	20	0	0	0	0	41	0	33	12	896									
Avg/Survey	34	23	0	1	0	0	0	3	0	2	1	64										

John Day Dam
Avian Zones



John Day Weekly Averages

	Temp:	Secchi:	Fallbacks
Sun	71	6.0	Bypass
Mon	71	6.0	9
Tues	71	6.0	Bypass
Wed	70	6.0	Bypass
Thur	71	6.0	7
Fri	70	6.0	Bypass
Sat	71	6.0	Bypass
AVG:	71	AVG: 6.0	AVG 8
			MAX 9
			MIN 7

	NE1	NE2	S.Ent	SE1	N.Ent	JBS Diff	Bay19
Sun	8.2	8.2	1.2	9.7	1.5	4.6	1.4
Sun	8.6	8.6	1.3	9.7	1.5	4.6	1.4
Mon	9.0	9.0	1.2	9.5	1.4	4.5	1.4
Mon	8.2	8.2	1.4	10.0	1.6	4.6	1.3
Tues	8.4	8.3	1.3	10.3	1.5	4.5	1.5
Tues	8.1	8.2	1.2	9.8	1.6	4.5	1.4
Wed	8.4	8.2	1.3	9.1	1.5	4.6	1.2
Wed	8.2	8.3	1.4	9.8	1.4	4.6	1.4
Thur	8.2	8.3	1.7	9.2	1.5	4.5	1.3
Thur	8.3	8.5	1.4	10.5	1.4	4.5	1.3
Fri	8.1	8.3	1.7	9.0	1.5	4.5	1.3
Fri	8.2	8.3	1.4	8.5	1.5	4.5	1.2
Sat	8.2	8.2	1.8	9.5	1.5	4.5	1.3
Sat	8.1	8.0	1.7	9.2	1.6	4.6	1.5
AVG:	8.3	8.3	1.4	9.6	1.5	4.5	1.4